

Burt Munro *Challenge*

Indian Motorcycles Beach Racing Clubman's Class

1. Support class for riders who are unable to enter in NZ Championship classes who do not have an MNZ Championship Licence.
2. Open class to any motorcycle.
3. Only for riders with an MNZ Club Licence or who purchase a One Event Licence.
4. Riders may also enter the Burt Munro Trophy 50 mile and SMCC 1 Mile Dash.
5. Fuel- Open
6. Machines must have large clearly readable race numbers displayed.
7. Motorcycles must be in sound condition suitable for racing with adequate brakes. Machines will be examined for compliance with MNZ rules.
8. Full safety gear is required as per MNZ rule chapter 8.



- 8.1 **Protective Clothing:**
Protective clothing must be examined by a competent official of MNZ prior to being used in each competition event. The minimum standard of protective clothing for events shall be as follows in this chapter.
- 8.1 a Riders shall ensure that all protective clothing is, as a minimum standard, as listed in this chapter. Helmet details must be shown in the appropriate section in the rider's logbook.
- 8.1 b **Riders with long hair should tie it up in a bun, or braid and tuck it into their shirt.**
- 8.1 c **Enduro and Cross Country:**
- | | |
|----------------|--|
| Safety Helmets | - as per rule 8.2a |
| Boots | - as per rule 8.3 |
| Jerseys | - heavyweight cotton or similar type fabric with long sleeves. |
| Trousers | - long leather, nylon motocross, heavy worsted (e.g. army type). |
| Gloves | - compulsory |
| Goggles | - at the choice of the rider |
| Body Armour | - commercially available Motorcycle Body Protection (armour) that must include back protection |
- 8.1 d **Motocross, Motocross TT, Grass Hill Climbs and Grass Track:**
- | | |
|--------------------|--|
| Safety Helmets | - as per rule 8.2a |
| Boots | - as per rule 8.3 |
| Jersey | - heavyweight cotton or similar type fabric with long sleeves |
| Trousers | - long leather, nylon motocross, heavy worsted (e.g. ex army type) |
| Gloves | - compulsory |
| Goggles | - at the Stewards discretion |
| Knee Pads & Braces | - recommended or at riders choice |
| Body Armour | - commercially available Motorcycle Body Protection (Armour) that must include back protection |
- 8.1 e **Trial:**
- | | |
|----------------|----------------------------------|
| Safety Helmets | - as per rule 8.2a |
| Boots | - as per rule 8.3 |
| Jerseys | - at choice of the rider |
| Trousers | - full length of strong material |
| Gloves | - at choice of the rider |

- 8.1 f **Mini Motocross:**
- | | |
|----------------|--|
| Safety Helmets | - as per rule 8.2a with an open face helmet recommended |
| Boots | - as per rule 8.3 |
| Jersey | - heavy weight cotton or similar type fabric with long sleeves |
| Trousers | - long leather, nylon motocross, heavy worsted, heavy corduroy or heavy denim (Jeans) |
| Gloves | - compulsory |
| Goggles | - at the Steward's discretion |
| Body Armour | - commercially available Motorcycle Body Protection (Armour) that must include back protection |

- 8.1 g **Pit Bikes:**
- Except for the following, rule 8.1c applies;
- Exceptions:**
- Boots – a purpose manufactured motocross or pit bike boot is recommended. Otherwise, boots must be well constructed, either all leather or leather uppers, or leather substitute and solid rubber sole not less than 25cm from the inner sole to the top of the boot and must be above ankle height.
- The wearing of knee pads or braces and elbow pads is compulsory.

- 8.1 h **Beach Racing:**
- | | |
|-----------------|--|
| Safety Helmets | - as per rule 8.2a |
| Boots | - as per rule 8.3 |
| Jacket/Trousers | - leather, Kevlar, nylon motocross, nylon/motorcycle PVC wet weather gear |
| Gloves | - compulsory (motorcycle types only). |
| Eye Protection | - as per rule 8.2j |
| Body Armour | - commercially available Motorcycle Body Protection (Armour) that must include back protection |

- 8.2 **Helmets:**
- At all MNZ sanctioned events approved design Motorcycle helmets will be worn when any rider or passenger is astride a machine which is in motion, whether these are 2, 3 or 4 wheeled vehicles, except for the official "Ride By", which precedes the racing proper. This will take place behind a responsible person.

Any rider guilty of abusing this "ride by" with inappropriate riding style such as wheel stands and jumps, can, at the discretion of the Meeting Steward, be banned from competing at that meeting and no entry fee will be refunded.

8.2 a

Competition Helmet Standards:

All new helmets available in New Zealand are manufactured overseas. These are made to various standards. The following standards are acceptable for helmets for use in MNZ events;

Off Road	AS/NZS 1698:2006
Europe	ECE 22-05, 'P', 'NP' or 'J' ECE 22-06, 'P', 'NP' or 'J'
Japan	JIS T 8133:2015
USA	SNELL M2015 SNELL M2020D SNELL M2020R

FIM Racing Homologated Helmet (label typically affixed on chin strap)

The 'NZ Ag Hat' which is a Motorcycle Helmet complying with NZS8600 is NOT approved for ANY form of competitive motorcycling or for the transit of persons above the speed of 30kph.

For International events the following standards apply:

Europe	ECE 22-05, 'P', 'NP' or 'J' ECE 22-06, 'P', 'NP' or 'J'
Japan	JIS T 8133:2015
USA	SNELL M2015 SNELL M2020D SNELL M2020R

FIM Racing Homologated Helmet (label typically affixed on chin strap)

8.2 b

All helmets manufactured, as evidenced by the manufacturers date of manufacture labelling, more than 10 years prior to the date of an event may not be used under the terms of rule 8.2d. Where no date of manufacture is visible on the helmet the onus is on the competitor to prove that the helmet is less than 10 years old.

8.2 c

Helmets manufactured with standards other than those approved can only be used in competition after approval by MNZ.

8.2 d

Approval will be given upon receipt of a certificate from the Standards Association of New Zealand or a competent authority (recognised by MNZ) stating that such a standard meets one of the approved standards.

8.2 e

The Steward or his/her deputy is empowered to impound any helmet considered of insufficient standard or, if of approved design, in a damaged or unsound condition.

8.2 f

Only helmets with a strap retaining system are permitted. The strap must be fastened any time the helmet is required to be worn.

- 8.2g Each competitor will be required to prove good fit of his/her helmet.
- 8.2h All helmets, regardless of approved marks, must provide temple protection (commonly known as 'Jet' or 'Open Face' or 'Full Face').
- 8.2i Helmet peaks, if worn, must be of flexible material attached by press studs, straps, plastic screws, or tape. The peak must be capable of being torn from the helmet in the event of an accident. Helmets provided with metal or alloy screw attachments as original will be accepted, as well as metal or alloy screw replacements, provided the original mounting in the helmet is not modified in any way.
- 8.2j Face shields must be of an approved flexible plastic or moulded material. Perspex face shields are not permitted.
- 8.2k No helmet will be drilled, screwed or taped other than as per original manufacture, or helmet manufacturer's instructions. The rider is required to provide proof that it is a helmet manufacturer's instruction.
- 8.2l Polycarbonate helmets that have been painted are banned from use in competition.
- 8.2m **Care of your Helmet:**
YOUR POLYCARBONATE HELMET MUST NOT BE PAINTED.
 Make sure your helmet is not subject to solvents or fuel in storage or transport to and from and during meetings.
 Solvents of any kind must not be used to clean your helmet – use soap and water.
 Any sticker should only be placed on a helmet by using the adhesive provided on the sticker.
 Do not place your helmet where it can be subject to sunlight, e.g. car windows, etc.

 MNZ strongly recommends, on advice from manufacturers, that you do not use a helmet for more than three years.

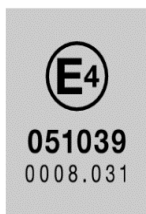
 Make sure your helmet is not dropped, or subjected to abuse in any way. If this happens have it re-examined by a qualified person or replace it.
- 8.2 n
- a. No items may be fitted to the helmet that could interfere with the structural integrity of the helmet in the event of an accident. A helmet is made to provide protection. A helmet is not to be used as a platform to attach foreign objects.
 - b. Tear offs, Roll offs and similar may be fitted to goggles/visors if approved for the event. All other accessories are strictly forbidden on any part of the riders head protection.
 - c. The Steward of the event has the right to reject the use of any helmet or any other accessory not covered elsewhere in this rule that they consider a safety concern.

International Helmet Standards

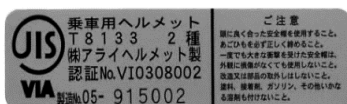
ECE 22 – 05 and ECE 22 – 06 (P, NP or J)

The ECE mark consists of a circle surrounding the letter E followed by the distinguishing number of the country which has granted approval.

E1 for Germany, E2 for France, E3 for Italy, E4, for Netherlands, E5 for Sweden, E6 for Belgium, E7 for Hungary, E8 for Czech Republic, E9 for Spain, E10 (- vacant), E11 for UK, E12 for Austria, E13 for Luxembourg, E14 for Switzerland, E15 (- vacant), E16 for Norway, E17 for Finland, E18 for Denmark, E19 for Romania, E20 for Poland, E21 for Portugal, E22 for the Russian Federation, E23 for Greece, E24 for Ireland, E25 for Croatia, E26 for Slovenia, E27 for Slovakia, E28 for Belarus, E29 for Estonia, E30 (-vacant), E31 for Bosnia and Herzegovina, E32 for Latvia, E34 for Bulgaria, E37 for Turkey, E40 for Macedonia, E43 for Japan, E44 (-vacant), E45 for Australia, E46 for Ukraine, E47 for South Africa, E48 for New Zealand.



Below the letter E, the **approval** number should always begin with 05. Below the approval number is the serial production number. (Label on retention system or comfort interior).



JIS T 8133:2007 (valid until 31.12.2019)

JIS T 8133:2015



SNELL M2015

- 8.3 **Footwear:**
For speed events, boots must be well constructed, either all leather or leather uppers or leather substitute and solid rubber sole not less than 25cm from the inner sole to the top of the boot.
Scott, Vendramini and Heckle Plastic motorcycle competition boots and Sidi nylon boots are also approved for competition.
- 8.3a **Non Speed Events:**
For non-speed events such as Trials and Gymkhanas, rubber reinforced safety boots (fireman's type) having a steel reinforcing within the sole are an option to the above. Calf length boots constructed of leather or similar material would be more desirable.
- 8.3b **Mini Motocross:** a purpose manufactured motocross boot is recommended, but a sturdy leather or gumboot (at least 200mm high) is acceptable.